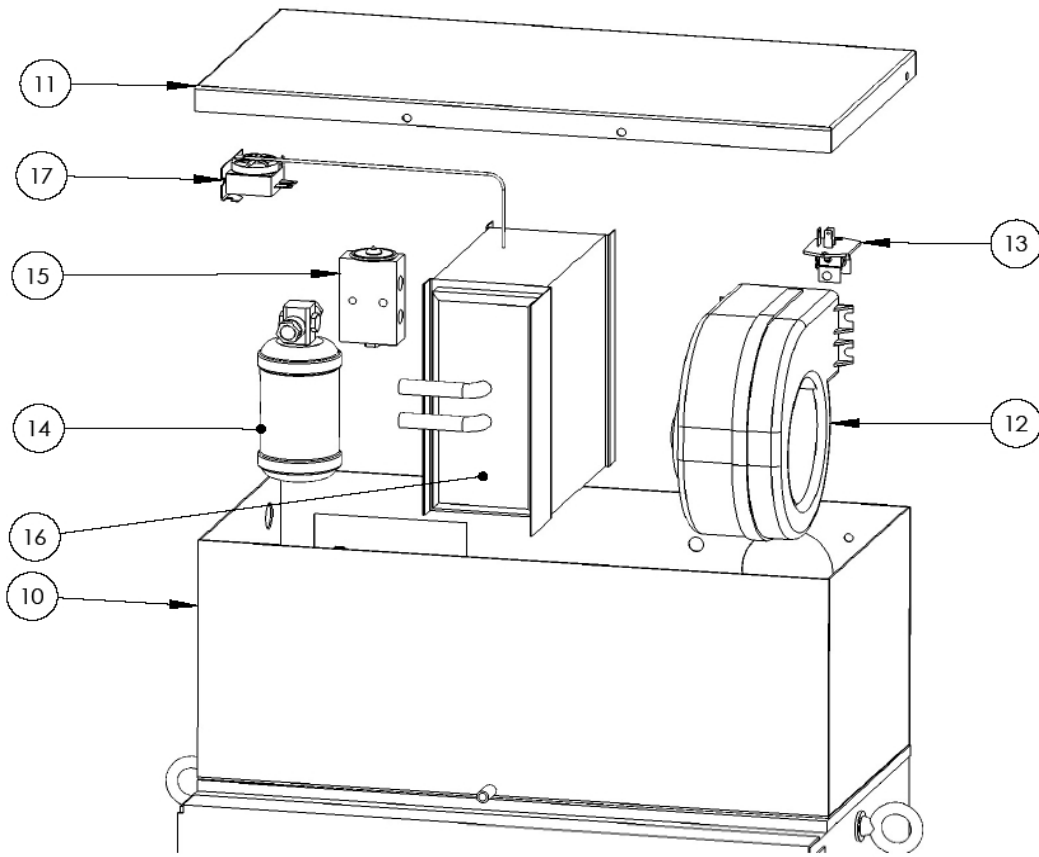


29-7100-BD EVAPORATOR SECTION



10.	100-1530	EVAPORATOR WELDMENT
11.	100-1531	EVAPORATOR LID
12.	106-3013	BLOWER
13.	104-1070	RESISTOR
14.	107-1040	DRIER
15.	108-40-1004	EXPANSION VALVE
16.	109-1341	EVAPORATOR COIL
17.	104-1002	THERMOSTAT

EVAPORATOR SECTION



202-2003 WIRE HARNESS ASSBY



104-R7100 PRESSURE SWITCH



104-1702 RELAY



104-1044 BREAKER



507-01-03-03 DRAIN TUBE



205-2006 FAN SPEED SWITCH LABEL



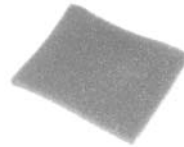
104-1021 FAN SPEED SWITCH



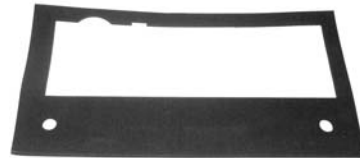
105-4000-2 DRIER /TXV TUBE



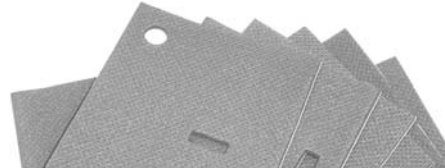
105-4100-2 TXV SUCTION TUBE



200-500 RETURN AIR FILTER



102-9720 MOUNTING GASKET



102-9700 INSULATION KIT



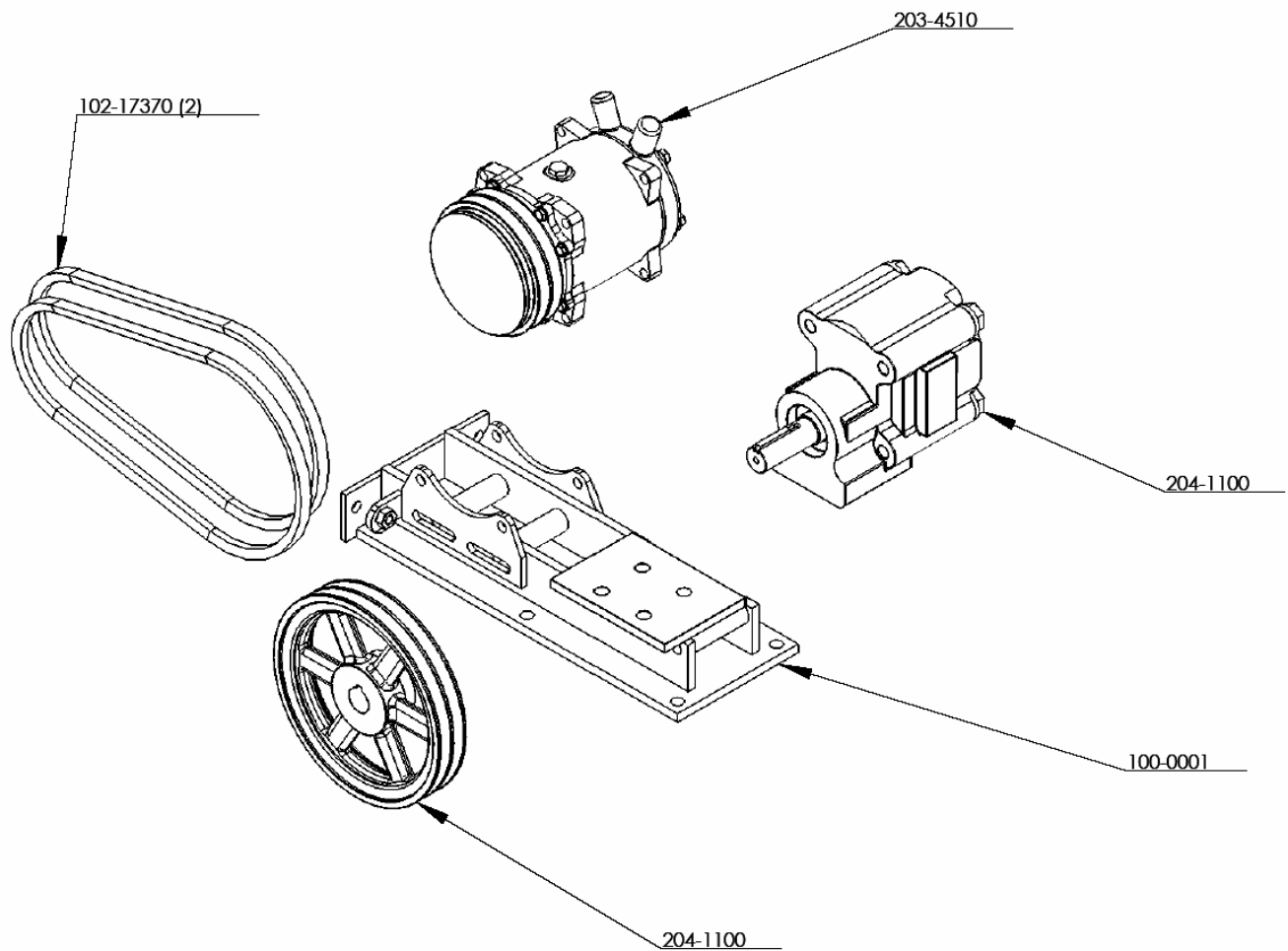
205-2007 MODE SWITCH LABEL



104-1011 MODE SWITCH

507-01-07A-00 EVAPORATOR HARDWARE KIT

COMPRESSOR BOX SECTION



204-1100 MOTOR, HYDRAULIC - CI - 10 GPM
204-1101 SHEAVE, 8inX1in 2 GR
203-4510 COMP. - SANDEN 12V 134a
100-0001 MOUNT
102-17370 COMPRESSOR BELT

NOT SHOWN:

204-2404-6-4 HYDRAULIC FITTING--ST- MT- MP
204-6801-8-8 HYDR. FITTING.-90 DEGREE-MT-AO
201-1783-A BULKHEAD #10
201-1782-A BULKHEAD #8
201-1781-A BULKHEAD #6
100-3200 REMOTE HYD./COMP. BOX -TR 10

COMPRESSOR BOX SECTION



204-6801-8-8 90 ° FITTING



204-6400-6-4 CASE DRAIN FITTING



204-6400-8-12 MOTOR FITTING



204-6464-8-8 MOTOR TO VALVE FITTING



204-6410-10-8 FITTING ADAPTER



204-6408-8-8-8 TEE FITTING



204-2700-8-8 BULKHEAD FITTING



204-2700-6-6 BULKHEAD FITTING



* CASE DRAIN HOSE



* REFRIGERANT DISCHARGE HOSE



* REFRIGERANT SUCTION HOSE



* REFRIGERANT LIQUID HOSE



* HYD. RETURN HOSE



* HYD. JUMPER HOSE

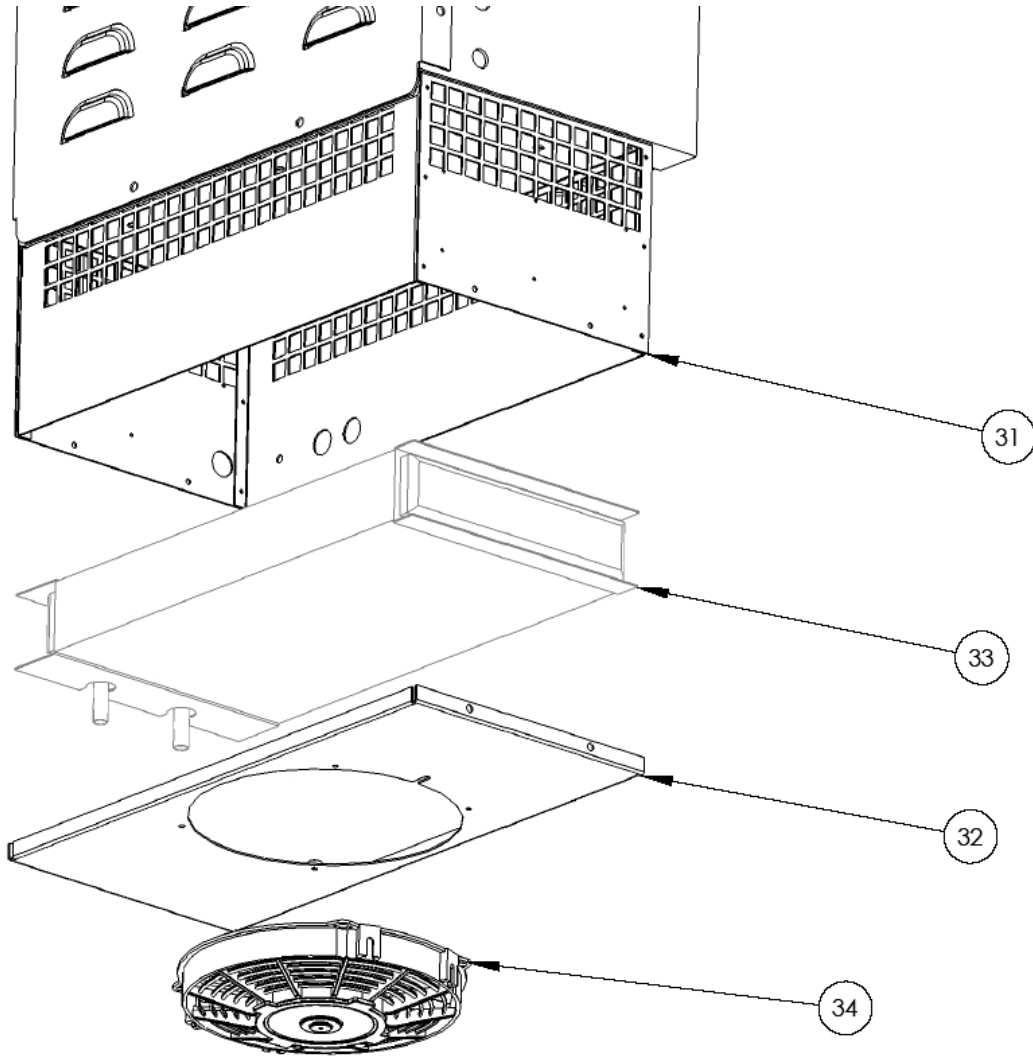


* HYD. POWER HOSE

*COMPRESSOR BOX HARDWARE KIT

* Order by exact model number, serial number, and description

CONDENSER SECTION



- | | | |
|-----|----------|--------------------|
| 31. | 100-1510 | CONDENSER WELDMENT |
| 32. | 100-1511 | CONDENSER LID |
| 33. | 109-1017 | CONDENSER COIL |
| 34. | 106-8013 | CONDENSER FAN |

NOT SHOWN:
CONDENSER HARDWARE KIT